

JOHNNY JOINT®

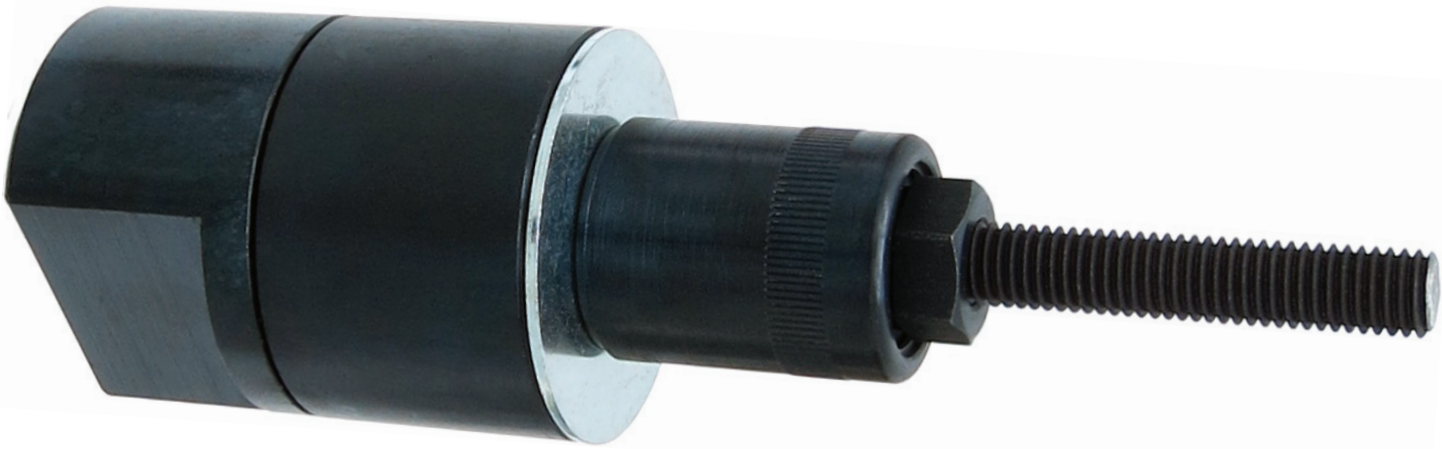
PERFORMANCE ROD ENDS

CE-9112T, CE-9110T & CE-9111T JOHNNY® JOINT TOOL
USAGE INSTRUCTIONS & TECHNICAL MANUAL

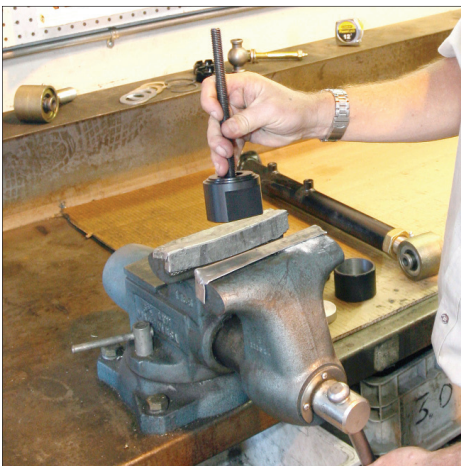


Johnny Joint® Assembly Instructions

Johnny Joint® Assembly/Disassembly Tools from RockJock make building and rebuilding 2", 2 1/2" and 3" Johnny Joints® easy! All you need to provide is a vice and the appropriate combination wrench for your tool! This tool is made 100% in house by RockJock professionals. Should this tool ever need rebuilding, all parts are available directly from RockJock.



Johnny Joint® Assembly Instructions



1) Start by installing the base of the tool in a sturdy bench vise.
 NOTE: this tool may also be used in hand or on Johnny Joints® that are in a vehicle.



2) Slide the Johnny Joint® that you will be disassembling onto the threads of the tool, making sure the snap ring side is facing up! The outer shell of the Johnny Joint® will lock into one of the machined shoulders on the tool's base.



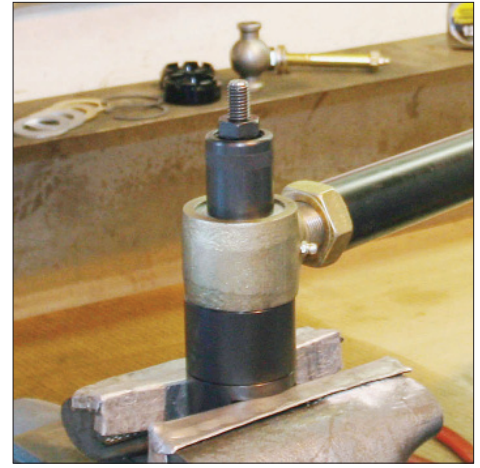
3) Spin the press nut on by hand until it reaches the side washer of the Johnny Joint®. Then with the proper wrench, tighten the press nut to compress the urethane inside the joint. You only need to tighten the press nut enough to release the load off of the snap ring.



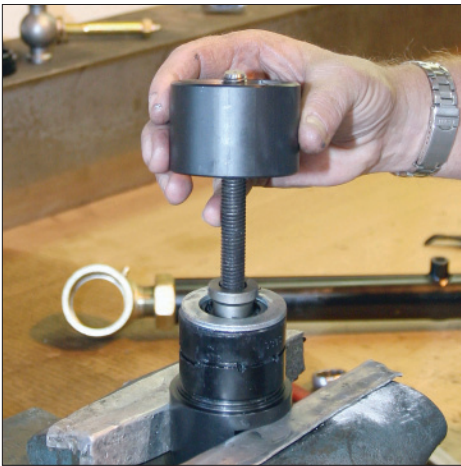
4) Remove the snap ring with a pair of good quality snap ring pliers. Straight or angled style will work.



5) With the snap ring removed, you may now back the press nut off to release the load on the internals of the Johnny Joint®. Once the load is relieved, you may spin the press nut back off of the threads of the tool and remove the nut and the tool from the tool base.



6) Examine the sleeve that is included with the tool. The bore of this sleeve is tapered. Install the sleeve small side down, so that the bore indexes onto its corresponding shoulder on the tool base. Set the Johnny Joint® on top of the sleeve - snap ring groove side down - and then reinstall the press nut. Tighten the press nut to push the internals out of the joint and into the sleeve.



7) You may now pull the Johnny Joint® outer shell off of the internals and the tool. Remove the press nut and then remove the sleeve.



8) You may now disassemble, clean, and inspect the Johnny Joint® internals. Wear on the ball center can generally be cleaned with emory cloth and the ball center reused. Bushings that are worn, washers that are bent, and snap rings that are bent or showing wear should be replaced. Thoroughly clean the outer shell. Carefully inspect the snap ring groove for debris, and then remove any dirt, grease, or urethane that is found.

Continue to the next page... 

Johnny Joint® Assembly Instructions



1) Thoroughly clean the Johnny Joint® outer shell, then index it onto it's shoulder on the tool base - make sure the snap ring groove side is up. Before installing the internals, grease the inside of the shell with good quality, non-synthetic moly lube - we use Chevron brand name.



2) Grease the ball center with the moly lube, and then preassemble it with the bushings. The bushings interlock and are not a male/female style. Make sure the bushings are fully interlocked before attempting further assembly.



3) Put the sleeve on top of the Johnny Joint® small side down, install the lower washer first, and then install the internals. NOTE: examine the washer to make sure you are installing it with the sharp side of the washer stamping out.



4) Install the outside washer. Again, ensure that it is being installed with the sharp side of the stamping of the washer away from the urethane.




5) Run the press nut back on by hand until it's snug. Tighten it only enough to allow the snap ring to be installed. Over-tightening can cause the new side washers to bend.



6) With the press nut still in place, remove the sleeve, and give the snap ring groove another close look for debris. During the installation of the internals, urethane can be scraped off of the bushings and into the groove. After you have ensured the groove is clean, you may install your snap ring. Make sure the snap ring is installed sharp side of it's stamping out.

Continue to the next page...



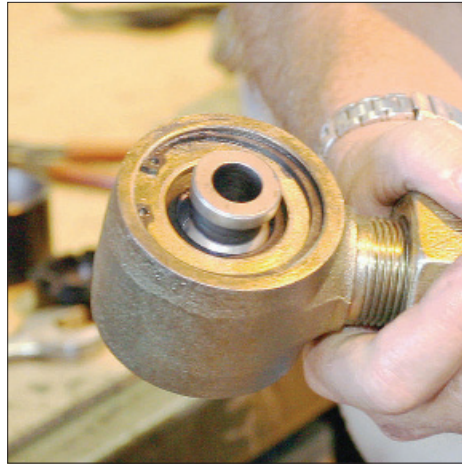
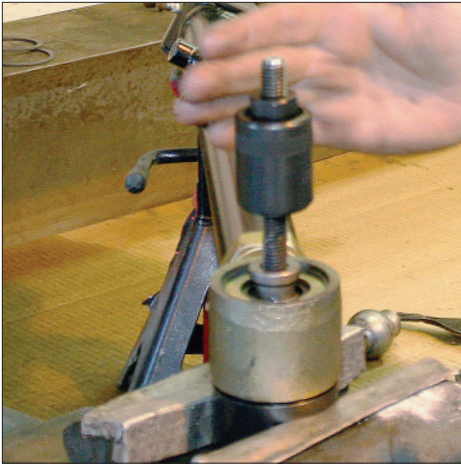
 @RockJock4x4

 /RockJock4x4

 /RockJock4x4byJohnCurrie

 **ROCK
JOCK** BY JOHN CURRIE

1592 Jenks Dr.
Corona, Ca. 92878
(714) 367-1580




7) Release the tension on the press nut and then spin it off of the threads of the tool. The Johnny Joint® is now complete. Give it one more final inspection, and don't forget to grease it before use! Regular greasing will provide long Johnny Joint® life.

8) Your finished, assembled Johnny Joint® should look like this!
A steel washer is provided so that you may assemble the tool as a unit for storage.



 @RockJock4x4

 /RockJock4x4

 /RockJock4x4byJohnCurrie

 **ROCK
JOCK** BY JOHN
CURRIE

1592 Jenks Dr.
Corona, Ca. 92878
(714) 367-1580