



RUBICON MANUFACTURING INC. 3290 MONIER CR. RANCHO CORDOVA, CA. 95742 916-473-4600

## INSTALLATION INSTRUCTIONS FOR: RE9700 BUMPER/SWING-OUT TIRE CARRIER

### **Tools required:**

- Center punch
- 3/8" or 1/2" hand drill
- 3/8" drill bit
- 1/2" drill bit
- 9/16, 3/4, & 3/8 wrenches
- Adjustable wrench

### **Bumper Installation:**

1. Remove all stock parts from the area the bumper is going to attach. Save the bottom two bolts which mount to the bottom of the frame. You will need them later.
2. Remove the rubber grommet on the body mount near the bumper corners. This will allow for an easier bumper installation.

**Note:** Keep the bumper and swing-out unassembled at this time for ease of installation.

3. Drill out the stock bumper mounting holes using the 1/2" drill bit.

Note: in some instances the holes may need to be oversized to fit the bumper.

4. Install the bumper. At this time you will also need to install the frame brackets.

**Note:** There are different frame brackets for the YJ and TJ. See Figures 3 & 4 under "Parts" on page 6 to see which ones you should have.

5. Refer to photos "Step 5 thru 8 TJ" and "Step 5 thru 8 YJ" on page 2 for reference on steps 5 thru 8. Use the four 1/2" nuts to tighten the bumper until there is about a 1/8" gap remaining.
6. Drill the holes in the frame with the brackets in place using the 1/2" drill bit.

**Note:** Keep the drill as straight as possible to insure proper alignment.

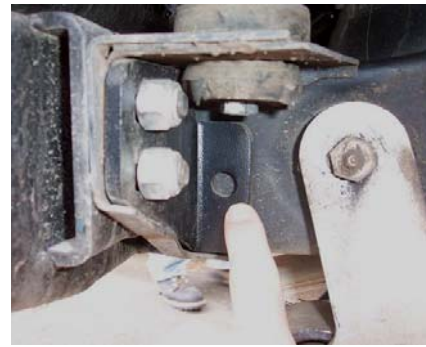
7. Now locate the frame plate brackets and the four 1/2" x 4" bolts (the frame plate bracket has the two pem nuts attached). Assemble the frame bracket making sure to tighten the bolts.

**Note:** The YJ uses only two 4" bolts and two ny-locks (in place of the pem nuts).

8. Tighten all hardware on the bumper at this time (including the bottom factory two bolts).



Step 5 thru 8 TJ reference



Step 5 thru 8 YJ reference

### **Swing-out Installation:**

1. Remove the passenger side taillight.

**Note:** This step is not necessary, however it will make the swing-out installation easier.

2. Locate the swing-out, stiffener bracket, and the associated hardware (Figure 2 in "Parts").
3. Attach the stiffener bracket to the pivot side of the swing-out using the 1" bolt and washer provided.

**Note:** The pivot side mounts to the passenger side of the bumper.

4. Now attach the swing-out to the bumper with the 1" bolt. Once the bolt is started center the holes in the stiffener bracket to the holes in the bumper using the 3/8" bolts. Tighten the bolts.



Step 3



Step 4

**Note:** Do not over tighten the 1" bolt. Swing-out should swing with some ease.

5. Locate the cam lever and locking rod.
6. Open the swing-out and insert the locking rod. Then close the swing-out to keep the locking rod from falling out.
7. Slide the black washer over the locking rod and then the bellville washer (raised side up).
8. Now attach the cam lever using the 3/8"x 2" bolt.



Step 8

9. Locate the white UHMW gate stop (Figure 5 in "Parts") and mount it to the two holes in the center of the bumper with the two sheet metal screws.
10. Check to make sure the swing-out opens and locks smoothly.
11. Trial fit your spare tire to the tire mount. The tire mount adjusts for different wheel back spacing by turning it clockwise or counter clockwise. Set final mount position so the curved plate is on top to support the wheel. Install spare tire and secure with the large plate washer and T-bar/lug wrench.

### **Hi-Lift Mount Installation:**

1. The Hi-Lift mounts in a vertical position on the back of the carrier so open carrier away from vehicle.
2. Place Hi-Lift base over the stud on the small platform (on the lower tube of carrier), and place the beam over the stud (on the upper tube of the carrier) so the handle of the jack fits into the indentation -refer to Hi-Lift mounting figure below.
3. Use supplied wing nut and washer to hold Hi-Lift to upper carrier tube. The lower stud is for positioning and does not require a nut. Note that there is a hole in the small platform for locking the Hi-Lift at its base.



Hi-Lift Mount Step 2 and 3

### **Gas Can Mount Installation:**

1. Locate the gas can mount and hardware (Figure 7 in "Parts" - note brace style has changed) and refer to Gas Can Mount Figures on page 5.
2. Attach the angled base to the swing-out using the two 3/8" bolts. Do not tighten the bolts at this time

**Note:** the angled base goes between the two tabs on the swing-out with the base facing out.

3. Now attach the can mount to the angled base with the supplied Flat Head bolts.

4. Attach the "boomerang" can mount brace between the can mount and the carrier hinge gusset (with slotted hole at the can mount). Use other supplied Flat Head bolt at the can mount and supplied hex bolt at the carrier hinge gusset.
5. Tighten all the bolts
6. Finally add the clamping bracket into the slot on the base and insert your gas can.

**Gas Can Mount Figures**



Installation Step 2 Figure 1



Installation Step 3 Figure 1



Installation Step 3 Figure 2



Installation Step 4 Figure 1



Installation Step 5



Final Set-Up Step 6

**Parts**



Figure 1: Bumper/Swing-out Assembly



Figure 2: Stiffener Bracket & Hardware



Figure 3: TJ Frame Bracket Kit



Figure 4: YJ Frame Bracket Kit

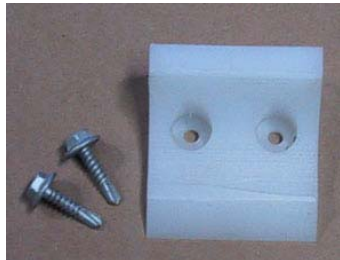


Figure 5: Gate Stop Bracket



Figure 7: Gas Can Mount Kit (old brace shown, new brace is "boomerang" shaped)