

INSTALLATION MANUAL

FOR

ROCK KRAWLER SUSPENSION, INC.

JK MID ARM SYSTEMS

NINTH EDITION

1/7/13

ROCK KRAWLER

S U S P E N S I O N

Dear customer: Thank you for purchasing the best system on the market for your Jeep Vehicle. We are sure you will be happy with this system after your installation is complete. Please take your time during the installation and be sure to do it correctly. Completely read the directions before starting your installation so you know what to expect. Remember, your personal safety depends on it. Should you have any questions during this installation feel free to give our tech line a call (518-270-9822) and we will be happy to help you.

Note: BE SURE TO CHECK ALL FASTENERS FOR PROPER TORQUE BEFORE TEST DRIVE. RECHECK AFTER 500 MILES AND BE SURE TO CHECK PERIODICALLY.

WARNING

- Properly block and secure vehicle prior to installation.
- Always wear safety glasses when using power tools
- Rock Krawler Suspension recommends the use of locktite on all hardware, unless noted otherwise.
- The use of limiting straps is recommended to avoid possible damage from over extending the suspension of your vehicle.
- Do not tighten connections until assemblies are installed in entirety.
- Read and understand all instructions, warnings and safety precautions in these instructions and your owner's manual before attempting to install these components.
- Proper installation of Rock Krawler Suspension products requires knowledge of recommended procedures for disassembly/assembly of OE vehicles and components. Access to OE shop manuals and special tools are required. Attempting to install this kit without knowledge of these procedures may affect the safety of your vehicle and or the performance of these components. Rock Krawler Suspension, Inc. strongly recommends that this system be installed by a certified mechanic with off road experience.
- Rock Krawler Suspension does not recommend combined use of suspension lifts, body lifts or other lift devices. Combined use of lifts may result in unsafe and unexpected

ROCK KRAWLER

S U S P E N S I O N

handling characteristics. Also, many states now have laws restricting Vehicle lift, bumper heights and other alterations. Consult local laws to determine if your proposed alterations (including installation of this system) comply with your state laws.

- Rock Krawler Suspension does not condone or authorize the use of any other suspension components with its products. Should Rock Krawler Systems or components be installed in junction with other products or not per the provided instructions Rock Krawler Suspension warranty is void and is not to be held accountable for any resulting actions.

Driving Tips

- For Rock Crawling it is best to have the front sway bar disconnected. This will allow your suspension to do its intended function. Our suspension will give your vehicle unmatched articulation which will give you traction to keep your vehicle moving. Let the system do the work. This will save on vehicle abuse.
- For Mud, especially sloppy mud, it is best to have the front sway bar connected. This will limit the suspension travel which is better for mud.
- For Highway driving it is best to have the front sway bar connected. This will give you the on highway ride and handling characteristics you expect. **If you choose otherwise, you do so at your own risk.**

IMPORTANCE OF JAM NUTS

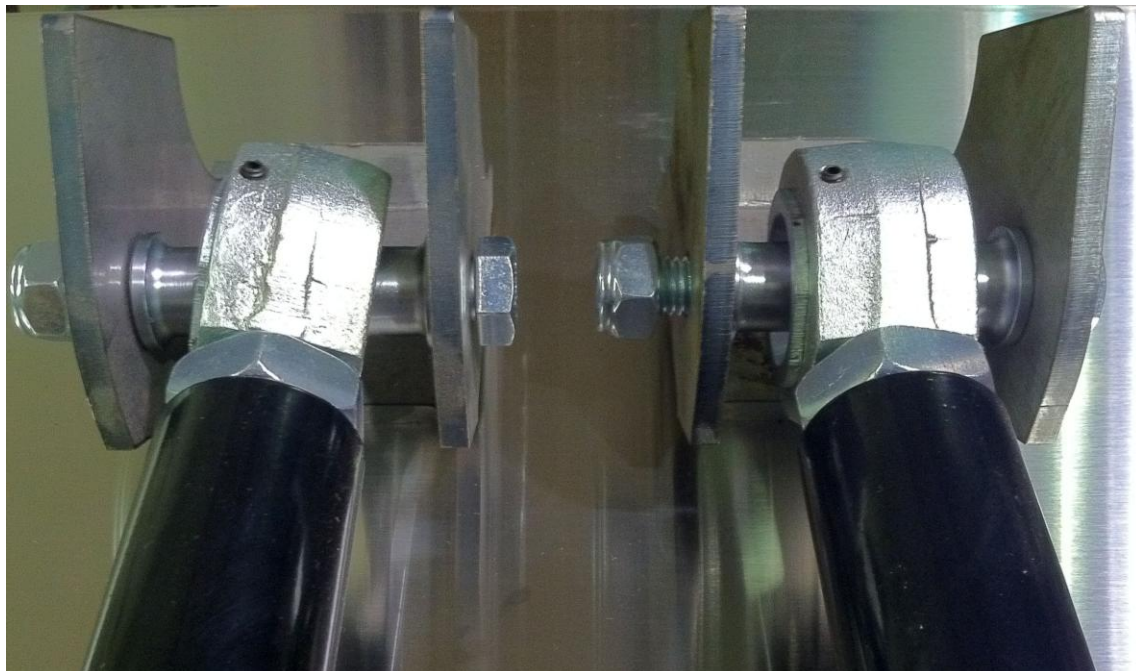
This is a note about jam nuts and the consumer's responsibility. The installer is the person or persons initially responsible for the proper setup of the suspension system and/or components and the initial tightening of the jam nuts. The jam nuts not only hold the orientation of the joint it is on but it is the single component that puts the necessary pre-load on the joints threads. The consumer or vehicle owner is the person or persons responsible for maintaining the jam nuts tightness. Failure to do so will result in the rapid deterioration of the threads in the control arm and will impose a "cause for concern" for the occupants of the vehicle. Failure to comply with the warnings headed in the directions regarding the amount of threads showing past the jam nut will also result in the same "cause for concern" for the occupants of the vehicle. All of the above items are the responsibility of the vehicle owner and or installer. If a threaded section of a component is bad it will show itself defective immediately. Threads that fail over time are due to improper maintenance of jam nuts and can be proven very easily. Thread sections and jam nuts not properly maintained or setup, are not covered under warranty. This is the end user and installer's responsibility.

ROCK KRAWLER

S U S P E N S I O N

ORIENTATION OF JOINTS

Orient the Krawler Joint for maximum amount of movement with the head of joint perpendicular to bolt / head of the joint vertical in the bracket it is mounting in. This same rule for orientation needs to be followed for all heim joints also. The photo below shows the wrong way (LEFT SIDE) and the right way (RIGHT SIDE) to orient a joint.



^WRONG WAY^

^RIGHT WAY^

MAINTAINING JOINTS

KRAWLER JOINTS (Rebuildable spherical joints):

- Depending on use and climate, every 3-5 years is a good time to take apart the joints, replace the raceways, and re-grease and clean the internals.
- Spray down the outside of our joints liberally with WD-40 or similar lubricant.
- Any additional information specific to a certain generation of Krawler Joints can be found on our website. (Rockcrawler.com)

HEIM JOINTS (Non- rebuildable spherical joints)

- Heim joints also benefit from spraying down the outside of them liberally with WD-40 or similar lubricant.

FLEX JOINTS (Rebuildable bushing joints)

- Our Flex Joints (bushing end) will benefit from being greased routinely. If there is no grease fitting, spray the exterior of the joint with WD-40 or similar lubricant.

ROCK KRAWLER

S U S P E N S I O N

TORQUE VALUES FOR HARDWARE AND JAM NUTS

- All 14mm and 9/16" bolts are torqued to 90-100 ft-lbs.
- All 12mm and 1/2" bolts are torqued to 75-80 ft-lbs.
- All 10mm and 3/8 bolts are torqued to 30-35 ft-lbs.
- All 7/8" Jam Nuts are to be torqued 200-220 ft-lbs. Up to 1/2" of threads showing past the jam nut is safe for final adjustment. These specifications are critical for the overall longevity of the threaded section.
- All 1" Jam Nuts are to be torqued to 250-300 ft-lbs. GET YOUR BIG BOY PANTS ON! Up to 5/8" of threads showing past the jam nut is safe for final adjustment. These specifications are critical for the overall longevity of the threaded section.

Component Starting Lengths If you have a 2.5" System

- 2.5" Front Track Bar Assembled Length = 32 9/16"**
- 2.5" Rear Track Bar Assembled Length = 39 3/4"**
- 2.5" Front Lower Control Arm Assembled Length = 23 1/8"**
- 2.5" X Factor Front Upper Arm Assembled Length = 19 5/16"**
- 2.5" Max. Travel Rear Lower Control Arm (2 Door) = 19 5/8"**
- 2.5" Max. Travel Rear Lower Control Arm (4 Door) = 20 1/8"**
- 2.5" X Factor Rear Lower Control Arm (2 Door) = 20 15/16"**
- 2.5" X Factor Rear Lower Control Arm (4 Door) = 21 1/16"**
- 2.5" X Factor Rear Upper Control Arm (2 Door) = 19.0"**
- 2.5" X Factor Rear Upper Control Arm (4 Door) = 18 7/16"**

Component Starting Lengths If you have a 3.5" System

- 3.5" Front Track Bar Assembled Length = 32 5/8"**
- 3.5" Rear Track Bar Assembled Length = 39 3/4"**
- 3.5" Front Lower Control Arm Assembled Length = 23 1/8"**
- 3.5" Front Upper Control Arm Assembled Length = 19 3/8"**
- 3.5" Flex System Rear Lower Control Arm (2 Door) = 19 1/2"**
- 3.5" Flex System Rear Lower Control Arm (4 Door) = 20"**
- 3.5" X Factor System Rear Lower Control Arm (2 Door) = 21"**
- 3.5" X Factor System Rear Lower Control Arm (4 Door) = 21 3/8"**
- 3.5" X Factor Rear Upper Control Arm (2 Door) = 19 1/2"**
- 3.5" X Factor Rear Upper Control Arm (4 Door) = 18 15/16"**

ROCK KRAWLER

S U S P E N S I O N

Component Starting Lengths If you have a 5.5" System

5.5" Front Track Bar Assembled Length = 32 5/8"

5.5" Rear Track Bar Assembled Length = 40"

5.5" Front Lower Control Arm Assembled Length = 23 1/4"

5.5" Front Upper Control Arm Assembled Length = 19 9/16"

5.5" System Rear Lower Control Arm (2 Door) = 21"

5.5" System Rear Lower Control Arm (4 Door) = 21 1/2"

5.5" Rear Upper Control Arm (2 Door) = 19 5/8"

5.5" Rear Upper Control Arm (4 Door) = 19"

Note: All Control Arms, Torque Arms, Track Bars and Triangulated 4 -Link Assemblies come pre-assembled, but they require final adjustment as specified in the directions above. These measurements are taken from the center of one bolt hole to center of the other bolt hole.



FRONT OF VEHICLE

- Make sure vehicle is on a level, hard working surface if you are using a floor jack and jack stands.
- Block the rear wheels so the vehicle cannot move and make sure the emergency brake is applied.
- Raise the front of vehicle and support with safety jack stands. Locate jack stands on the frame in front of the axle.
- If you are using a vehicle lift, place the lift arms according to those specific vehicles lifting procedures.

ROCK KRAWLER

S U S P E N S I O N

Ensure that the lift arms will not interfere with the components that are being replaced.

- Remove the front rims and tires with axle supported by a floor jack.
- Remove the front shocks. Save the OEM hardware to install the new shocks.
- Remove the front sway bar links.
- Lower the front axle assembly onto jack stands.
- Remove the front track bar from the vehicle and save the OEM hardware for reuse.
- Remove the front springs.
- **(FLEX / X-FACTOR / MAX TRAVEL)** Remove the front lower control arms and save the OEM hardware for reuse.
- **(ALL X-FACTOR KITS / 3.5" MAX TRAVEL)** Remove the front upper control arms and save the OEM hardware for reuse.

Note: *You may need to cut the passenger side front upper control arm bolt at the frame depending on the year of your JK. We have provided you with a new 12mm x 90mm bolt, washers, and nyloc nut.*

- **(ALL X-FACTOR KITS / 3.5" MAX TRAVEL)** Install the supplied front upper control arms set to the specified length for your kit according to our measurements. Secure using the OEM hardware OR a combination of OEM and our supplied 12mm x 90mm bolt, washers, and 12mm nyloc nut depending on the year of your vehicle.

Note: *If you are installing this kit with an aftermarket axle housing you may have to clearance the clevis mount on the upper control arm slightly.*

- **(FLEX / X-FACTOR/ MAX TRAVEL)** Install the front lower control arms set to the specified length for your kit according to our measurements using OEM hardware.

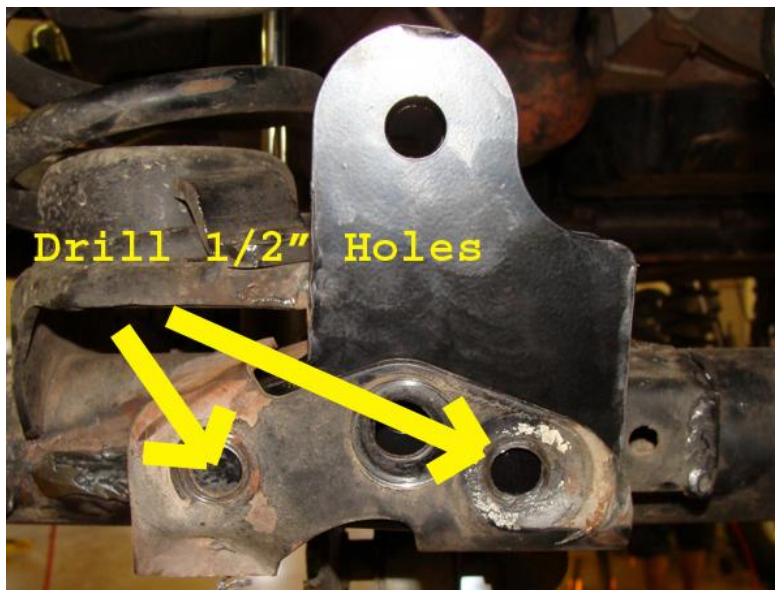
Note: *The bend in the arms is for improved ground clearance, the Monster Krawler Joint (spherical joint) is placed at the axle and the Monster Bushing Joint at the frame.*

ROCK KRAWLER

S U S P E N S I O N



- **(3.5" MAX TRAVEL / 5.5" X-FACTOR)** Install the supplied front track bar bracket into the factory track bar bracket on your axle. Secure it using the OEM lower track bar hardware. Then drill out the other two holes in the OEM bracket through the supplied bracket with a 1/2" drill bit.



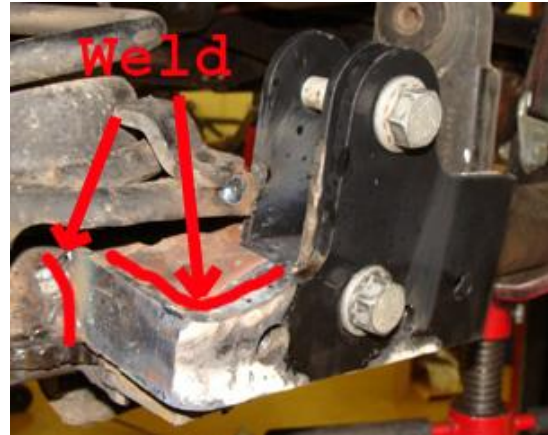
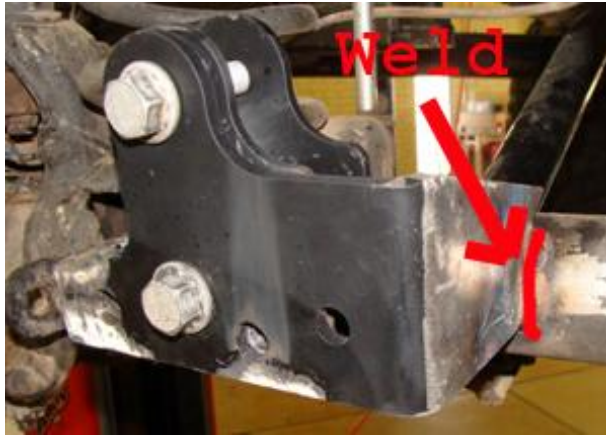
- **(3.5" MAX TRAVEL / 5.5" X-FACTOR)** Install the supplied front track bar support bracket to the factory bracket and our track bar bracket as shown below using the supplied 1/2" x 3" bolts, 1/2" washers, and 1/2" nyloc nuts.

Note: We require you to weld this bracket onto your axle tubes using a 1/4 inch fillet weld as seen in the photos below. The extra hole is there just in case you would like to relocate your steering stabilizer on top of the tie rod

ROCK KRAWLER

S U S P E N S I O N

instead of letting it hang down below. You may need to use a spacer depending on the stabilizer you use.



Steering Stabilizer Note

There is an extra hole in the front track bar bracket support bracket to allow for relocation of the OEM steering stabilizer as shown below. All you need is a spacer and the hardware.



Steering Stabilizer Relocated

- Install the supplied front track bar set to the specified length for your kit according to our measurements. Secure the frame and axle connections with the OEM hardware.

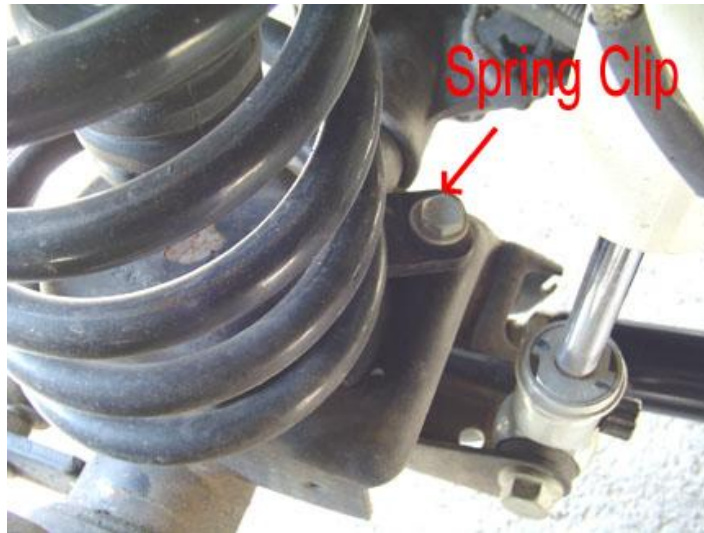
Note: When setting length, balance the amount of thread showing past the jam nuts. The bushing end goes at the frame and the heim joint end goes to the factory bracket at the axle. The bend in the track bar is for clearance of the differential and the orientation of the track bar is controlled by locking the jam nut of the flex joint at the frame. Once the vehicle is on the ground, you will need to check that the axle is centered under the vehicle. If not centered, adjust the track bar so the axle is centered.

- **(ALL X-FACTOR KITS / 3.5" MAX TRAVEL)** Install the supplied front spring retainer clips and secure the spring clip with the supplied 10mm x 35 mm bolts and nylok nuts.

Note: Place clip on the bottom coil, mark the hole in the spring pad and then drill a 10mm hole. The Driver's Side is shown below and the clip sits behind the axle as shown. On the Passenger Side it is the opposite.

ROCK KRAWLER

S U S P E N S I O N



- Install bump stops at this time if you have purchased them.

Note: To install mark the center of the spring pad and drill a 7/16" hole. Tap the hole you drilled to 1/2"x13 for the supplied hardware. Place the bump stop inside the coil spring and place the coil and bump stop onto the spring mount together. Tighten the hardware once the coil is placed on the spring pad.

- Install the supplied front coil springs. Make sure the end of the coil spring sits in the spring mount just as it did from the factory. If the coil is not seated properly it will bow more then it should and can damage your coil.
- Install the front shocks using OEM hardware.

REAR OF VEHICLE

- Make sure vehicle is on a level, hard working surface if you are using a floor jack and jack stands.
- Block the front wheels so the vehicle cannot move.
- Raise the rear of vehicle and support with safety jack stands. Locate jack stands on the frame behind the rear axle.
- If you are using a vehicle lift, place the lift arms according to those specific vehicles lifting procedures. Ensure that the lift arms will not interfere with the components that are being replaced.
- Remove the rear rims and tires with axle supported by a floor jack.
- Remove the rear shocks. Save the OEM hardware for reuse.

ROCK KRAWLER

S U S P E N S I O N

- Remove the rear sway bar links and save for reuse if your kit requires it.
- Lower the rear axle assembly onto jack stands.
- Remove the rear coil springs.
- Remove the rear track bar, save it and the OEM hardware for reuse.
- **(FLEX / X-FACTOR/ MAX TRAVEL)** Remove the rear lower control arms and save the OEM hardware for reuse.
- **(ALL X-FACTOR KITS / 3.5" MAX TRAVEL)** Remove the factory rear upper control arms and discard them, save the OEM hardware for reuse.
- Install the rear track bar relocation bracket using the OEM bolt and the supplied 7/8" O.D. x 9/16 I.D. x 1.625" long crush sleeve on the inside of the OEM lower track bar mount as shown below. Drill a 10mm hole through the top of the OEM bracket where the existing hole is in out new bracket and secure it with the supplied 10mm x 35mm bolt and 10mm nyloc nut.

Note: Tighten the 10mm hardware on the top of the bracket first to ensure the bracket sits flush and then tighten the remainder of the hardware. The OEM factory rear track bracket is weak so we require that the legs of our bracket be welded to the axle tube. This will prevent any failures of the rear track bracket assembly during hard use of your vehicle.



- **(ALL X-FACTOR KITS / 3.5" MAX TRAVEL)** Install the rear upper control arms set to the specified length for your kit according to our measurements and secure using the OEM hardware.

Note: When setting length, balance the amount of thread showing past the jam nuts. Setup the arm so the bend in the arm lays horizontal and towards the frame for increased tire clearance.

ROCK KRAWLER

S U S P E N S I O N

- **(3.5" FLEX / X-FACTOR / MAX TRAVEL)** Install the rear lower control arms set to the specified length for your kit according to our measurements using OEM hardware.

Note: *The bend in the arms is for improved ground clearance, the Monster Krawler Joint (spherical joint) is placed at the axle and the Monster Bushing Joint at the frame.*

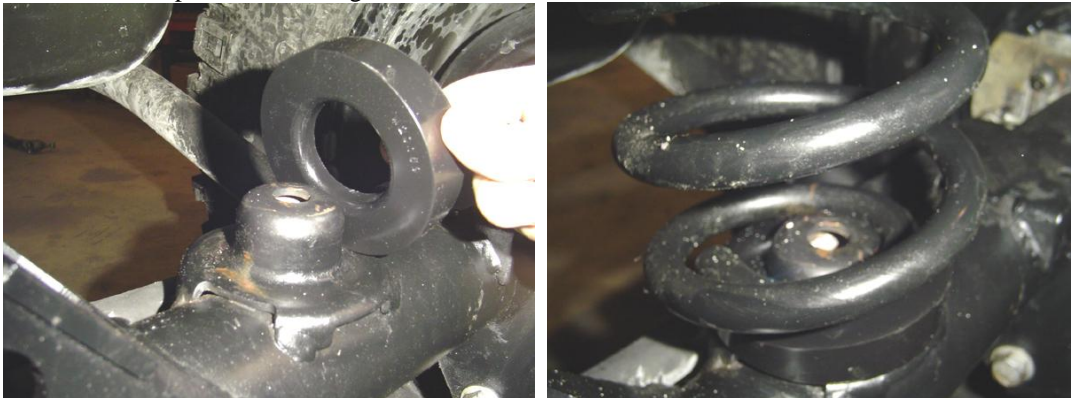
- **(STOCK MOD / FLEX / 2.5" MAX TRAVEL)** Reinstall the factory rear track bar in the newly supplied rear track bar bracket with the supplied 14mm x 80mm bolt, washers and nyloc nuts.
- **(X-FACTOR / 3.5" MAX TRAVEL)** Install the supplied rear track bar set to the specified length for your kit according to our measurements. Secure the frame connection with the OEM hardware and the axle connection with the supplied 14mm x 80mm bolt, 14mm washers, and 14mm nyloc nuts.

Note: *When setting length, balance the amount of thread showing past the jam nuts. The bushing end goes at the frame and the heim joint end goes to the factory bracket at the axle. The bend in the track bar is for clearance of the differential and the orientation of the track bar is controlled by locking the jam nut of the flex joint at the frame. Once the vehicle is on the ground, you will need to check that the axle is centered under the vehicle. If not centered, adjust the track bar so the axle is centered.*

IMPORTANT REAR TRACK BAR INFORMATION

If your coil spring and track bar make contact, you can break the jam nuts free on the track bar while it is bolted in place. Then roll the bend of the bar back away from the coil spring and loctite and tighten your jam nuts again. If you still have issues after doing this, you may need to adjust your pinion angle and/or wheelbase by adjusting the control arms.

- **(X-FACTOR/ 3.5" MAX TRAVEL)** Install the spring correction degree shims under the rear coils on the axle. The thick part of the shim goes towards the rear of the vehicle as shown below.



Note: *A simple and cost effective way to retain the rear coils to the axle is to use a hose clamp up through the center hole of the spring pad and clamp it around the bottom winding of the coil spring.*

- Install the Rock Krawler rear coil springs. Make sure to put the end of the coil winding all the way to the rear of the lower coil pad.

ROCK KRAWLER

S U S P E N S I O N

- **(X-FACTOR/ 3.5" MAX TRAVEL)** We require you to relocate the rear sway bar mounting brackets back one inch due to the axle being moved back one inch with the X-Factor kit. Unbolt the rear sway bar mounting brackets from the frame, measure one inch back from each mounting hole, mark and drill 4 new holes with a 5/16" drill bit. Using the (4) supplied 3/8 thread former screws remount the rear sway bar.

Note: Use WD-40 or lubricant on the supplied thread former screws to start them. This will make the process easier. Torque them down to 25 to 30 ft-lbs.



- Remove the wire hanger for the rear emergency brake cable and route them to have as much slack as possible.
- Install the rear shocks using the OEM hardware.

Note: We recommend the rear shock bodies should be no more than 2" in diameter or there is a risk of the rear shock contacting the rear track bar relocation bracket.

- Install bump stops if purchased additionally.

Note: Our rear fabricated bump stops mount to the factory bump stop pad on the rear axle using the supplied hardware. Use the existing holes in the factory pads. Make sure the bumps stop angles to the front of the vehicle as shown in the photo below.

ROCK KRAWLER

S U S P E N S I O N



BRAKE LINES

- **Front: (FLEX / X-FACTOR/ MAX TRAVEL)** Remove the factory front rubber brake lines and install the supplied extended stainless steel brake lines. Be sure to add slack to your ABS lines and route them with your new stainless steel lines using the supplied zip ties to secure them to each other. Do not worry about bleeding the brake system at this time unless your kit does not come with rear brake lines.

Note: The factory front brake lines on a 07'-10' are routed different then the front brake lines on a 11'+. We use the same brake line for all of our JK products thus we require you to route the line on the 11'+ just as if you were routing a line on the prior year JK's. The 15 degree angle built in the fitting is designed so the line is pushed away from the tire and wheel assembly. See the photos below to reference your new front brake line and ABS line routing.



ROCK KRAWLER

S U S P E N S I O N

- **Rear: (X-FACTOR/ MAX TRAVEL)** Remove the factory front rubber brake lines and install the supplied extended stainless steel brake lines. Now you can go ahead and bleed the brake system per the JK service manual.

SWAY BAR LINKS

- **Front:** With the vehicle sitting on its own weight on level ground install the supplied front sway bar disconnects.

Note: *If you have a Non Rubicon model you will use our manual disconnect feature. If you have a Rubicon model you can use your factory electronic sway bar disconnect. We still recommend that you manually disconnect the sway bar when you are articulating your Rubicon to the max. If not manually disconnected the sway bar and sway bar link can become in line with each other. If the sway bar flips out to the front because of this it will bend the sway bar link pin and this is not warranted.*

TOP

Use the supplied 1/2" x 2.5" bolt, .595" long spacer, and nyloc nut. Note the shoulder of the spacer goes against the sway bar itself.

BOTTOM

For the bottom connection attach the 1/2" x 2.0" long bolt with cross drilled hole to the factory sway bar link bracket. Secure the bolt with the supplied 1/2" jam nut. If you have a non-rubicon you can attach the bottom end of the sway bar link with the 2 nylon washers on either side of the rod end and secure it with the hair pin. If you have a rubicon you can simply secure the bottom rod end with the supplied 1/2" nylok nut.



Top Sway Bar Connection

Bottom: Non- Rubicon

Bottom: Rubicon

Note: *On some front sway bars you may have to ream out the hole out with a 1/2" drill bit. Start with the heims threaded entirely onto the pin, then fine tune the length of one of them to ease in removal and installation of the disconnect when parked on flat and level ground. Tighten the jam nuts against the heims after the heims have been oriented for maximum articulation. Ideally you want the heims parallel to each other and point straight forward.*

- **Rear:** With the vehicle sitting on its own weight on level ground install the supplied rear sway bar disconnects.

ROCK KRAWLER

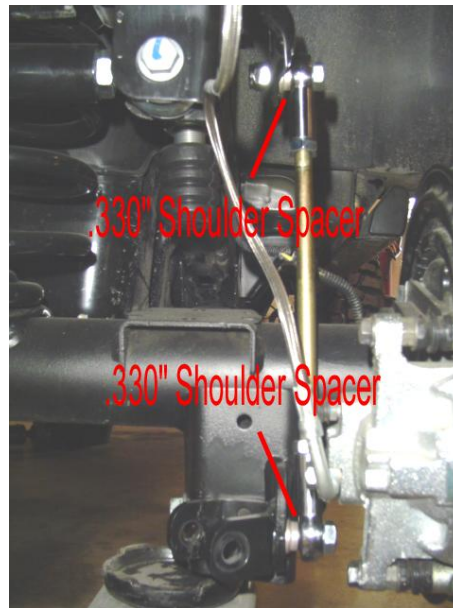
S U S P E N S I O N

(STOCK MOD / 2.5" FLEX) Reinstall the factory rear sway bar links using the OEM hardware.

(2.5" MAX TRAVEL / 3.5" FLEX) Install the supplied rear sway bar links on the outside of the OEM brackets and Sway Bar. Make sure the large washer is against the exposed bushing of the sway bar link and the smaller washer on the other side of the sway bar itself or the axle mount.

(X-FACTOR/ 3.5" MAX TRAVEL) Install the supplied rear sway bar links using the supplied hardware as shown below. Note the shoulder of the spacer goes towards the sway bar and the bottom mounting bracket.

Note: Start with the heims threaded entirely onto the pin, then fine tune the length of one of them to ease in removal and installation of the disconnect when parked on flat and level ground. Tighten the jam nuts against the heims after the heims have been oriented for maximum articulation. Ideally you want the heims parallel to each other and point straight forward.



HD ALUMINUM TIE ROD (if purchased separately)

The Rock Krawler HD Tie Rod requires the purchase of two new Tie Rod Ends from the JK stock drag link at the Pitman arm location. The OEM part number is **52060049AE**. Do not use a substitute part from Moog or anyone else. **VISUALLY INSPECT THE TIE ROD END FOR ANY DAMAGED THREADS AS THIS CAN DAMAGE THE THREADS INSIDE YOUR NEW HD TIE ROD.** Take the jam nuts supplied with the new HD Tie Rod kit and thread it all the way up the tie rod ends. If your purchased Tie Rod End has any damaged threads from delivery, manufacturing, etc then return them to whom you received them from. Extra fine threads such as these are easy to cause permanent damage or cross threading.

- Support the vehicle under the front axle with jack stands.
- With the front tires removed, disconnect the steering stabilizer from the steering stabilizer bracket.

ROCK KRAWLER

S U S P E N S I O N

- Remove the steering stabilizer bracket from the OEM tie rod and save for reuse depending on the model year of your JK.

Note: '07- '09 model years can reuse the factory steering stabilizer bracket with the supplied u-bolts on the new HD Tie Rod, '10+ model years will require the purchase of an aftermarket steering stabilizer bracket for use on a 1.625" diameter Tie Rod. Either our steering stabilizer bracket or other brands will work.

- Remove the cotter pins (if applicable) and nuts from the ends of the OEM Tie Rod Ends.
- Using a ball joint separator or dead blow technique, remove the Tie Rod Ends from the knuckles.
- Insert the new tie rod ends into the Rock Krawler HD Tie Rod and set it to the same operating length as the OEM Tie Rod.

Note: Measure the OEM tie rod operating length from center of one Tie Rod End to the center of the other Tie Rod End. When setting the new HD Tie Rod assembly to length, be sure to have a equal amount of threads showing past the jam nut on each side.

- Insert the Tie Rod Ends on the tie rod into the knuckle connections in the same orientation as the OEM units and torque the nuts down 90 to 100 ft-lbs.
- **Read the note below on how to properly setup this Tie Rod** and then tighten the jam nuts to 100-110 ft-lbs of torque, it is critical to apply enough pre-load. (Do not allow more than 1" of threads to show past the jam nut for final adjustment)

Note: The Ackerman angle in your steering requires slight up and down movements of the tie rod ends. It is completely normal that the tie rod has up and down movement in it. Once the toe is set, set the orientation of the tie rod (preferably horizontal) by pulling down on the driver side Tie Rod End and bottoming it out against the knuckle (as shown below). Then tighten down the driver side jam nut with the wheels point straight ahead. Now turn the steering wheel all the way to the passenger side, hold it there, and tighten the passenger side jam nut. Cycle the steering back and forth to ensure no jam nuts loosen up and nothing binds at any point in the steering's movement.



Tighten drivers side first with wheels straight

Tighten passengers side last with wheels turned

ROCK KRAWLER

S U S P E N S I O N

HD DRAG LINK ASSEMBLY

The Rock Krawler HD Drag Link requires the purchase of a new Tie Rod End from the JK stock drag link at the Pitman arm location. The OEM part number is **52060049AE**. Do not use a substitute part from Moog or anyone else. **VISUALLY INSPECT THE TIE ROD END FOR ANY DAMAGED THREADS AS THIS CAN DAMAGE THE THREADS INSIDE YOUR NEW HD TIE ROD.** Take the jam nut supplied with the new HD Drag Link kit and thread it all the way up the tie rod ends. If your purchased Tie Rod End has any damaged threads from delivery, manufacturing, etc then return them to whom you received them from. Extra fine threads such as these are easy to cause permanent damage or cross threading.

- Disconnect and remove the drag link from the vehicle using a ball joint separator or dead blow technique. Save the Tie Rod End at the pitman arm for reuse if it is still in good condition.
- Drill out the passenger drag link knuckle mounting position to 7/8" as shown below.



- Insert the split steel tapered sleeve into the knuckle as shown above.

Note: You can go back to the OEM geometry if the need ever arises. Simply pull the flip spacer out and install it on the bottom of the knuckle as it was factory.

- Measure the OEM drag link operating length from center of one Tie Rod End to center of the other Tie Rod End. Make note of this length.

ROCK KRAWLER

S U S P E N S I O N

- Assemble your new HD Drag Link with the new Tie Rod End you purchased and the factory Tie Rod End from your pitman arm location and set it to the length of the factory assembly you noted earlier.
- Install your new HD Drag Link to the top of your passenger side knuckle into the flip spacer and to the factory pitman arm location as shown in the photos below.
- Place the supplied 5/8 flat washer under the nut on the bottom side of the knuckle and torque the nuts down 90 to 100 ft-lbs.



Passenger side knuckle connection



Pitman arm connection

- Center the steering wheel using the turn buckle style quick adjuster in the new HD Drag Link. Locktite and tighten the jam nut at the knuckle end using the wrench flats on the drag link. Tighten the shaft collars to 35 to 40 ft-lbs.

Note: *Line up the slits in the shaft collars with the slits in the quick adjuster making sure they are no more than 1/4" away from the end of the quick adjuster for proper clamping. Orient the tie rod ends so the ball joints are free to move without binding. Also follow the SAE rules of thread engagement to make sure you don't have any of the Tie Rod Ends threaded out to far.*

ROCK KRAWLER

S U S P E N S I O N



Quick adjuster with shaft collars installed

It is a requirement that your vehicle be taken to a Jeep Dealership for an alignment. You should also get the printout of the alignment specs so you can reference back to them. If your steering wheel is off at all the ESP will be activated. This will be corrected once the vehicle is aligned by a certified Jeep dealership. Centering the steering wheel “by eye” is usually not good enough for ESP!

- Install rims and tires and lower the vehicle to the ground.

ROCK KRAWLER

S U S P E N S I O N

SHOCK MOUNTING (REMOTE RESI'S)



REAR DRIVER SIDE



REAR TRACK BAR BRACKET



FRONT RESIVOR

Before hitting the pavement or the trails be sure to make sure the control arms are oriented properly, all spherical joints (heim joints and Krawler Joints) are oriented correctly to allow for maximum movement without bind, and all jam nuts have locktite on them and are tight. Make sure the axles are properly centered, pinion angles are correct, there is proper slack in ABS lines, and all lines are properly routed. Go back over all your hardware and make sure each connection is tightened to its proper torque spec. Check your vehicles articulation and ensure that no moving parts contact or interfere with any other components throughout the travel (brake lines, shocks, coils, swaybar links). Also check to see if at full flex your coil spring losses tension, if so you may want to look into a limit straps. You may need to look at bump stops depending on what shocks you choose to run.

Congratulations, you have just finished installing your Rock Krawler Suspension System! Now your Jeep is ready for anything you can throw at it.